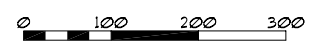
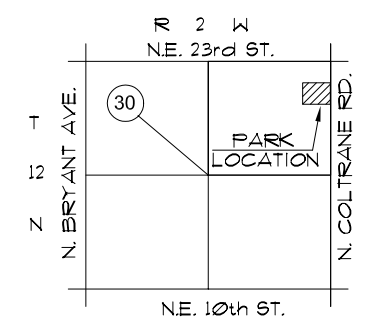


STATISTICS

- ACRES: 20
- PARKING SPACES: 23 - ASPHALT
- FACILITIES:
 - * COMMUNITY CENTER
 - * METAL PLAYGROUND EQUIPMENT
 - * (4) YOUTH BASEBALL FIELDS - NO LIGHTS
 - * (1) BASKETBALL GOAL
 - * (5) PICNIC AREAS
 - * YOUTH POOL - CLOSED



NOTES:

1. PARK BOUNDARY IS APPROXIMATE LOCATION ONLY.
2. LOCATION OF IMPROVEMENTS IS CONCEPTUAL. VERIFY LOCATION IN FIELD.